

MQ68

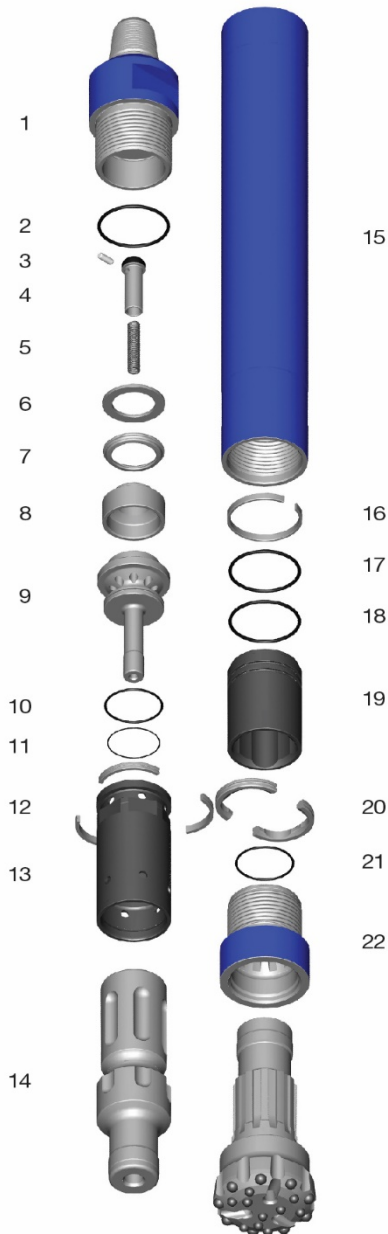


Parts and Specifications

Copyright © Mincon 2020, All Rights Reserved.



Mincon MQ68 Parts and Specifications



Item #	Part Number	Description
	MC601AS01	Mincon MQ68 (3 1/2" A.P.I. Reg. Pin)
1	MC601BH01	Backhead (3 1/2" A.P.I. Reg. Pin)
2	MD622OR01	O Ring
3	MB506CH01	Choke Blank
4	MB502CV01	Check Valve
5	MB503SP01	Spring
6	MB504SM01	Steel Make-Up Ring
7	MB505LR01	Lock Ring
8	MC603LM01	Lock Ring Mount
9	MD607DR01	Air Distributor
10	MD621OR01	O Ring
11	MD620OR01	O Ring
12	MC609SR01	Seating Ring
13	MC608IC01	Inner Cylinder
14	MC610PN01	Piston
15	MC611WS01	Wear Sleeve
16	MC612PR01	Piston Retaining Ring
17	MD622OR01	O Ring
18	MD622OR01	O Ring
19	MC613BB01	Aligner
20	MC614BR01	Bit Retaining Ring
21	MD621OR01	O Ring
22	MC615CK01	Chuck (QL60)
23	MD626SK04	Service Kit
	MD626SK04	Service Kit
3	MB506CH01	Choke Blank
-	MB506CH02	Choke 1/8" (3.2mm)
-	MB506CH03	Choke 3/16" (4.8mm)
5	MB503SP01	Spring
-	MD625OK04	O Ring Kit
	MD625OK04	O Ring Kit
2	MD622OR01	O Ring
10	MD621OR01	O Ring
11	MD620OR01	O Ring
17	MD622OR01	O Ring
18	MD622OR01	O Ring
21	MD621OR01	O Ring

Specification

Hammer Outside Diameter	146mm (5.75")
Hammer Length (Less Bit, Backhead Shoulder to Chuck)	1,002mm (39.4")
Backhead Spanner Flat Size	100mm (4")
Drill Bit Shank Type	QL60
Minimum Bit Size	159mm (6.25")
Hammer Weight (Less Bit)	93kg (205 lbs)
Drill Bit Weight	24.5kg (54 lbs)
Piston Weight	19.3kg (43 lbs)
Backhead Stand Off	0.75mm (0.03")
Make-up Torque	6,100 - 8,135Nm (4,500 - 6,000 lbf.ft)
Wear Sleeve Discard Limit	130.7mm (5.15")
Recommended Minimum Air Package	283 l/s @ 20.7 bar (600 cfm @ 300 psi)