

MQ85

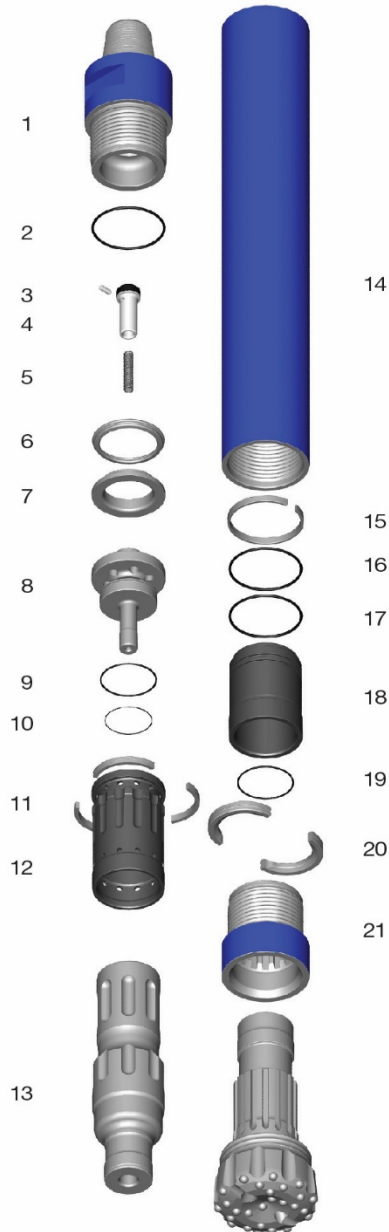


Parts and Specifications

Copyright © Mincon 2020, All Rights Reserved.



Mincon MQ85 Parts and Specifications



Item	Description	Part Number
	Mincon MQ85 (4 1/2" A.P.I. Reg. Pin)	MD801AS17
1	Backhead (4 1/2" A.P.I. Reg. Pin)	MD801BH03
2	O Ring	MD822OR01
3	Choke Blank	MB506CH01
4	Check Valve	MD802CV01
5	Spring	MB503SP01
6	Steel Make-Up Ring	MD804SM01
7	Lock Ring	MD805LR01
8	Air Distributor	MD807DR01
9	O Ring	MD821OR01
10	O Ring	MD820OR01
11	Seating Ring	MD809SR01
12	Inner Cylinder	MD808IC01
13	Piston	MD810PN04
14	Wear Sleeve	MD811WS11
15	Piston Retaining Ring	MD812PR01
16	O Ring	MD822OR01
17	O Ring	MD822OR01
18	Aligner	MD813BB10
19	O Ring	MD821OR01
20	Bit Retaining Ring	MD814BR06
21	Chuck (QL80) HD	MD815CK04
22	Service Kit	MD826SK05
	Service Kit	MD826SK05
3	Choke Blank	MB506CH01
-	Choke 1/8" (3.2mm)	MB506CH02
-	Choke 3/16" (4.8mm)	MB506CH03
5	Spring	MB503SP01
-	O Ring Kit	MD825OK05
	O Ring Kit	MD825OK05
2	O Ring	MD822OR01
9	O Ring	MD821OR01
10	O Ring	MD820OR01
16	O Ring	MD822OR01
17	O Ring	MD821OR01

Specification

Hammer Outside Diameter	193.7mm (7.625")
Hammer Length (Less Bit, Backhead Shoulder to Chuck)	1,339mm (52.7")
Backhead Spanner Flat Size	135mm (5.32")
Drill Bit Shank Type	QL80
Minimum Bit Size	216mm (8.5")
Hammer Weight (Less Bit)	240kg (529 lbs)
Drill Bit Weight	60kg (132 lbs)
Piston Weight	52kg (92 lbs)
Backhead Stand Off	0.75mm (0.03")
Make-up Torque	8,135-10,850Nm (6,000-8,000 lbf.ft)
Wear Sleeve Reverse Limit	Non-reversible
Wear Sleeve Discard Limit	175mm (6.9")
Recommended Minimum Air Package	425 L/s @ 24 bar (900 cfm @ 350 psi)