

MR120

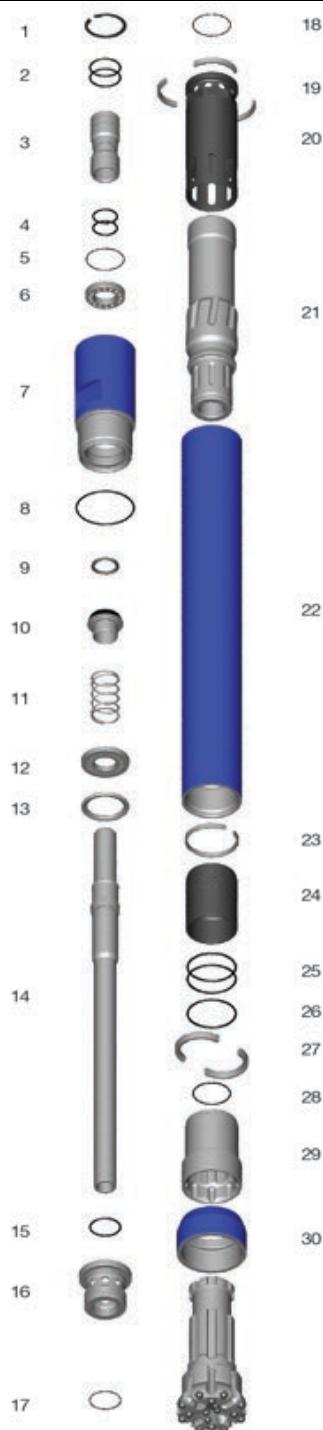


Parts and Specifications

Copyright © Mincon 2021, All Rights Reserved.



Mincon MR120 Parts and Specifications



Item	Part Number	Description	Notes
	MR120AL01 (R)	MR120 Hammer 4" Remet	
	MR120AL02 (R)	MR120 Hammer 4" Metzke	
	MR120AL03 (R)	MR120 Hammer 4 1/2" Remet	
	MR120AL04 (R)	MR120 Hammer 4 1/2" Metzke	
	MR120AL05 (R)	MR120 Hammer 115 ARDX	
1	1300-0780	Internal Circlip	
2	BS 226	O Ring x 2	4" Remet only
	BS 228	O Ring x 2	4 1/2" Remet only
3	MX5053AT01	Adaptor Tube	4" Remet only
	MX5053AT11	Adaptor Tube	4" Metzke only
	MR120AT23	Adaptor Tube – lugged	4 1/2" Remet only
	MR120AT33	Adaptor Tube – lugged	4 1/2" Metzke only
	MR120AT73	Adaptor Tube – lugged	115 ARDX only
4	BS-224	O Ring x 2 (Adaptor tube ID)	
5	BS-040	O Ring (Airscren)	Not required for lugged adaptor tubes
6	MX5053SC01	Air Screen	Not required for lugged adaptor tubes
7	MR120BH01	Back Head	4" Remet only
	MR120BH11	Back Head	4" Metzke only
	MR120BH21	Back Head	4 1/2" Remet only
	MR120BH31	Back Head	4 1/2" Metzke only
	MR120BH41	Back Head	115 ARDX only
8	BS-241	O Ring (Backhead)	
9	8406-175	Check Valve Seal - Nitrile U	
10	MR120CV01	Check Valve Plunger	
11	MR120SP01	Check Valve Spring	
12	MR120SS02	Spacer	
13	MX4550LR01	Lock Ring	
14	MR120ST01	Sample Tube - Large Bore	
	MR120ST03	Sample Tube - Small bore	
15	BS 228	O Ring (ST mount ID)	
16	MR120DR02	Sample Tube Mount	
17	BS 234	O Ring (ST mount OD)	
18	BS 040	O Ring (Seating ring)	
19	MX5053SR01	Seating Ring	
20	MR120IC01	Inner Cylinder	
21	MR120PN01	Piston	
22	MR120WS01	Wear Sleeve	
23	MX5053PR01	Piston Retain Ring	
24	MR120BB01	Aligner Bearing Bush	
25	N7-92x4	O Ring x 2	
26	BS 237	O Ring	
27	MR120BR01	Bit Ring	
28	BS 152	O Ring	
29	MR120CK01 (21)	Chuck (NB:21 for Retention variants)	
30	MR120(R)CSxxxL	Chuck Sleeve	
	MR120OK01	O Ring Kit	
	MR120MK01	Make up kit	
	5120xxxYY	MR120 Bit	
	5120190C1	MR120 Bit Collaring	

Specifications

Hammer Outside Diameter	120mm (4.72")
Hammer Length (Less Bit, Backhead Shoulder to Chuck)	1191mm (46.9")
Backhead Spanner Flat Size	94mm (3.7")
Drill Bit Shank Type	MR116
Backhead thread types	115 ARDX
	4" and 4.5" Remet
	4" and 4.5" Metzke
Drill Bit Size Range	127mm – 143mm (5" – 5.675")
Hammer Weight (Less Bit)	60kg (132 lbs)
Maximum Drill Bit Weight	21kg (46lbs)
Piston Weight	15kg (33lbs)
Backhead Stand Off	0.75mm (0.03")
Recommended Minimum Air Package	425 L/s @ 24 bar (900 cfm @ 350 psi)



Compatible drill bits – MR120

Description	Part Number	Diameter	Face Type	Quantity and size (inch)			Sample holes	Weight
				Outer	Face	Centre		
MR120 5" HF Bit	5120X127H2	127mm (5")	Hard Formation	8 (5/8")	6 (9/16")	5 (1/2")	2	15kg (33.1 lbs)
MR120 5 1/8 HF Bit	5120X130H2	130mm (5.125")	Hard Formation	8 (5/8")	6 (9/16")	5 (1/2")	2	15kg (33.1 lbs)
MR120 5 1/4 HF Bit	5120X133H2	133mm (5.25")	Hard Formation	8 (5/8")	6 (9/16")	5 (9/16")	2	15kg (33.1 lbs)
MR120 5 3/8 HF Bit	5120X137H2	137mm (5.375")	Hard Formation	8 (5/8")	6 (5/8")	5 (9/16")	2	15kg (33.1 lbs)
MR120 5 1/2 HF Bit	5120X140H2	140mm (5.5")	Hard Formation	8 (5/8")	6 (5/8")	5 (9/16")	2	15kg (33.1 lbs)
MR120 5 5/8 HF Bit	5120X143H2	143mm (5.625")	Hard Formation	8 (5/8")	6 (5/8")	5 (9/16")	2	15kg (33.1 lbs)
MR120 6" Collaring Bit	5120152C1	152mm (6")	Drop Centre	8 (5/8")	6 (9/16")	4 (1/2")	2	16kg (35.3 lbs)
MR120 6 1/2 Collaring Bit	5120165C1	165mm (6.5")	Drop Centre	8 (5/8")	8 (9/16")	4 (9/16")	2	18kg (39.7 lbs)
MR120 7 1/2 Collaring Bit	5120190C1	190mm (7.5")	Drop Centre	8 (5/8")	12 (5/8")	4 (6/16")	2	21kg (46.3 lbs)