

MR116

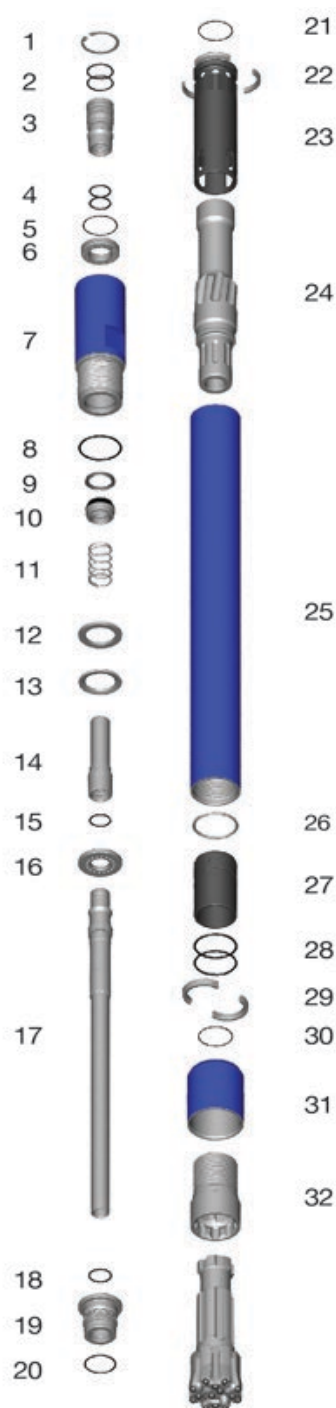


Parts and Specifications

Copyright © Mincon 2021, All Rights Reserved.



Mincon MR116 Parts and Specifications



Item	Part Number	Description	Notes
	MR116AL01	MR116 Hammer 4" Remet	
	MR116AL02	MR116 Hammer 4" Metzke	
	MR116AL03	MR116 Hammer 4 ½" Remet	
	MR116AL04	MR116 Hammer 4 ½" Metzke	
	MR116AL05	MR116 Hammer 115 ARDX	
1	1300-0780	Internal Circlip	
2	BS 226	O Ring x 2	4" Remet only
	BS 228	O Ring x 2	4 ½"Remet only
3	MX5053AT01	Adaptor Tube	4" Remet only
	MX5053AT11	Adaptor Tube	4" Metzke only
	MR120AT23	Adaptor Tube – lugged	4 ½"Remet only
	MR120AT33	Adaptor Tube – lugged	4 ½"Metzke only
	MR120AT73	Adaptor Tube – lugged	115 ARDX only
4	BS 224	O Ring x 2 (Adaptor tube ID)	
5	BS 040	O Ring (Airscreen)	Not required for lugged adaptor tubes
6	MX5053SC01	Airscreen	Not required for lugged adaptor tubes
7	MR116BH01	Backhead	4" Remet only
	MR116BH11	Backhead	4" Metzke only
	MR116BH21	Backhead	4 ½" Remet only
	MR116BH31	Backhead	4 ½" Metzke only
	MR116BH41	Backhead	115 ARDX only
8	BS 240	O Ring (Backhead)	
9	8406-175	Check Valve Seal	
10	MR120CV01	Check Valve Plunger	
11	MR120SP01	Check Valve Spring	
12	MR120SS02	Spacer	
13	MX4550LR01	Lock Ring	
14	MR116ST01	Sample Tube (Large bore)	
	MR116ST03	Sample Tube (Small bore)	
15	BS 139	O Ring (ST mount ID)	
16	MR116DR02	Sample Tube Mount	
17	BS 223	O Ring (ST mount OD)	
18		O Ring x 2 (Obsolete)	
19	BS 040	O Ring (Seating ring)	
20	MR116SR01	Seating Ring	
21	MR116IC01	Inner Cylinder	
22	MR116PN01	Piston	
23	MR116WS01	Wear Sleeve	
24	MR116PR01	Piston Retain Ring	
25	MR116BB01	Aligner Bearing Bush	
26	N7 88 X 4	O Ring x 2 (Aligner)	
27	BS 236	O Ring (Aligner)	
28	MR116BR01	Bit Ring	
29	BS 152	O Ring (Bit ring)	
30	MR116CSyyyL	Chuck Sleeve	
31	MR116CK01	Chuck	
	MR116CK02	Chuck Wide spline - Preferred design	
	MR116OK01	O-ring service kit	
	MR116MK01	Make up service kit	
		MR116 Bit	
	5116xxxYY	121/124/127/130/133mm	
	5116165C1	MR116 Bit 165mm Collaring	
	5116190C1	MR116 Bit 190mm Collaring	



Specifications

Hammer Outside Diameter	116mm (4.57")
Hammer Length (Less Bit, Backhead Shoulder to Chuck)	1,185mm (46.5")
Backhead Spanner Flat Size	94mm (3.7")
Drill Bit Shank Type	MR116
Backhead thread types	115 ARDX 4" and 4.5" Remet 4" and 4.5" Metzke
Drill Bit Size Range	121mm – 127mm (4.75" – 5")
Hammer Weight (Less Bit)	60kg (132 lbs)
Maximum Drill Bit Weight	13kg (29 lbs)
Piston Weight	14kg (31 lbs)
Backhead Stand Off	0.75mm (0.03")
Recommended Minimum Air Package	425 L/s @ 24 bar (900 cfm @ 350 psi)

Compatible drill bits – MR116

Description	Part Number	Diameter	Face Type	Quantity and size (inch)			Sample holes	Weight
				Outer	Face	Centre		
MR116 121mm HF Bit	5116121H1	121mm (4.75")	Hard Formation	8 (5/8")	6 (9/16")	3 (1/2")	2	14kg (30.9 lbs)
MR116 124mm HF Bit	5116X124H2	124mm (4.875")	Hard Formation	8 (5/8")	6 (9/16")	5 (1/2")	2	14kg (30.9 lbs)
MR116 127mm HF Bit	5116X127H2	127mm (5")	Hard Formation	8 (5/8")	6 (9/16")	5 (1/2")	2	14kg (30.9 lbs)
MR116 130mm HF Bit	5116X130H2	130mm (5.125")	Hard Formation	8 (5/8")	6 (9/16")	5 (1/2")	2	14kg (30.9 lbs)
MR116 133mm HF Bit	5116X133H2	133mm (5.25")	Hard Formation	8 (5/8")	6 (9/16")	5 (1/2")	2	14kg (30.9 lbs)
MR116 165mm Collaring Bit	5116165C1	165mm (6.5")	Drop Centre	8 (5/8")	8 (5/8")	4 (9/16")	2	17kg (37.5 lbs)
MR116 190mm Collaring Bit	5116190C1	190mm (7.5")	Drop Centre	8 (5/8")	12 (5/8")	4 (9/16")	2	19kg (41.9 lbs)