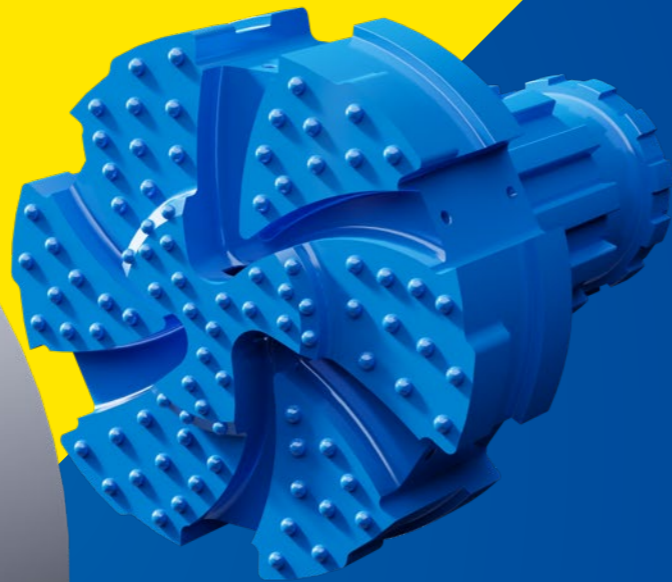
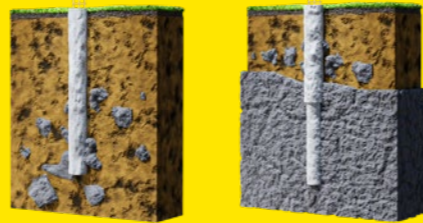


RETRIEVABLE RING BIT SYSTEM

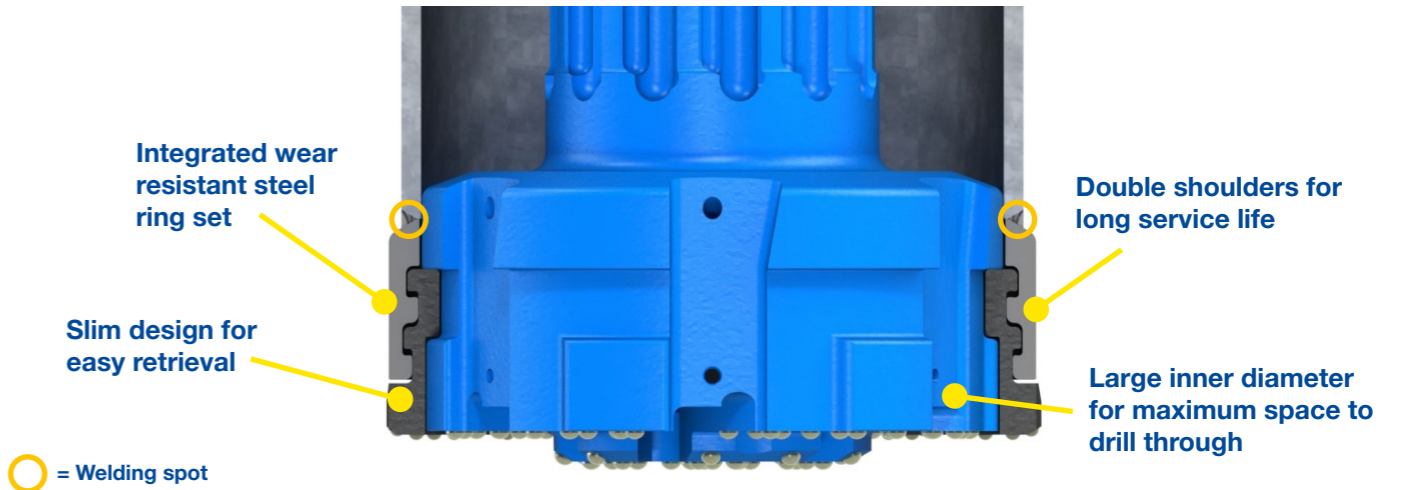


Retrievable ring bit system can be used several times. This is made possible by the features on the ring bit that have been designed to reduce the friction against the soil, allowing an easy retrieval of the casing.

Also, the large inner diameter of the ring bit makes this system ideal for drilling rock sockets through the ring bit.

MAIN APPLICATIONS

- Skin friction piles where casing is fully retrieved
- Anchoring applications
- Pre-drilling/temporary casing applications
- Energy/water wells where casing is fully removed



System is available from 114 to 1 524 mm casings and for all major shank designs.

System product code	Casing OD		Max wall		Ring bit ID		Ring bit OD		Pilot bit OD	
	mm	inch	mm	inch	mm	inch	mm	inch	mm	inch
R114-10-81	114.3	4.5"	10	0.39"	81	3.19"	123	4.84"	92.5	3.64"
R127-10-95	127	5"	10	0.39"	95	3.74"	135.5	5.33"	105	4.13"
R140-10-104	139.7	5.5"	10	0.39"	104	4.09"	148	5.83"	118	4.65"
R152-10-116	152.4	6"	10	0.39"	116	4.57"	161	6.34"	129	5.08"
R159-10-122	158.8	6.25"	10	0.39"	122	4.80"	168	6.61"	136	5.35"
R168-10-128	168.3	6.63"	10	0.39"	128	5.04"	179	7.05"	146	5.75"
R178-10-142	177.8	7"	10	0.39"	142	5.59"	189	7.44"	156	6.14"
R194-12.7-154	193.7	7.63"	12.7	0.5"	154	6.06"	204	8.03"	165	6.50"
R219-12.7-175	219.1	8.63"	12.7	0.5"	175	6.89"	231	9.09"	191	7.52"
R244-12.7-200	244.5	9.63"	12.7	0.5"	200	7.87"	258	10.16"	216	8.50"
R254-12.7-210	254	10"	12.7	0.5"	210	8.27"	268	10.55"	226	8.90"
R273-12.7-226	273	10.75"	12.7	0.5"	226	8.90"	286	11.26"	245	9.65"
R301-12.7-251	301.6	11.87"	12.7	0.5"	251	9.88"	316	12.44"	273	10.75"
R323-12.7-273	323.9	12.75"	12.7	0.5"	273	10.75"	338	13.31"	294	11.57"
R339-12.7-287	339.7	13.37"	12.7	0.5"	287	11.30"	354	13.94"	311	12.24"
R355-12.7-305	355.6	14"	12.7	0.5"	305	12.01"	368	14.49"	326	12.83"
R406-12.7-352	406.4	16"	12.7	0.5"	352	13.86"	430	16.93"	376	14.80"
R457-12.7-378	457.2	18"	12.7	0.5"	378	14.88"	474	18.66"	427	16.81"
R508-16-446	508	20"	16	0.63"	446	17.56"	538	21.18"	475	18.70"
R559-16-504	558.8	22"	16	0.63"	504	19.84"	584	22.99"	522	20.55"
R610-16-555	609.6	24"	16	0.63"	555	21.85"	638	25.12"	574	22.60"
R660-16-580	660.4	26"	16	0.63"	580	22.83"	680	26.77"	622	24.49"
R711-16-641	711.2	28"	16	0.63"	641	25.24"	738	29.06"	674	26.54"
R762-16-685	762	30"	16	0.63"	685	26.97"	788	31.02"	723	28.82"
R813-16-736	812.8	32"	16	0.63"	736	28.98"	837	32.95"	775	30.51"
R863-16-775	863.6	34"	16	0.63"	775	30.51"	890	35.04"	823	32.40"
R914-16-837	914.4	36"	16	0.63"	837	32.95"	940	37.01"	874	34.41"
R1016-16-926*	1 016	40"	16	0.63"	926	36.46"	1 042	41.02"	969	38.15"
R1066-16-970*	1 066.8	42"	16	0.63"	970	38.19"	1 092	42.99"	1 025	40.35"
R1220-20-1120*	1 219.2	48"	20	0.79"	1 120	44.09"	1 247	49.09"	1 163	45.79"
R1321-22-1210*	1 320.8	52"	22	0.87"	1 210	47.64"	1 349	53.11"	1 259	49.57"
R1524-22-1404*	1 524	60"	22	0.87"	1 404	55.28"	1 552	61.10"	1 460	57.48"

*Large diameter system can be engineered based on the specific customer requirements.