

INTEGRATED RING BIT SYSTEM, SMALL



Integrated ring bit systems, divided into small and large designs, are designed for drilling end-bearing piles through overburden into bedrock. The system can drill straight and inclined piles through boulders and rock layers and it easily manages situations where the bedrock itself is inclined.

The robust ring bit is integrated into casing shoe, which makes it safe to drill in loose ground and over water.

The system is compatible with most external threaded casing joint couplers.

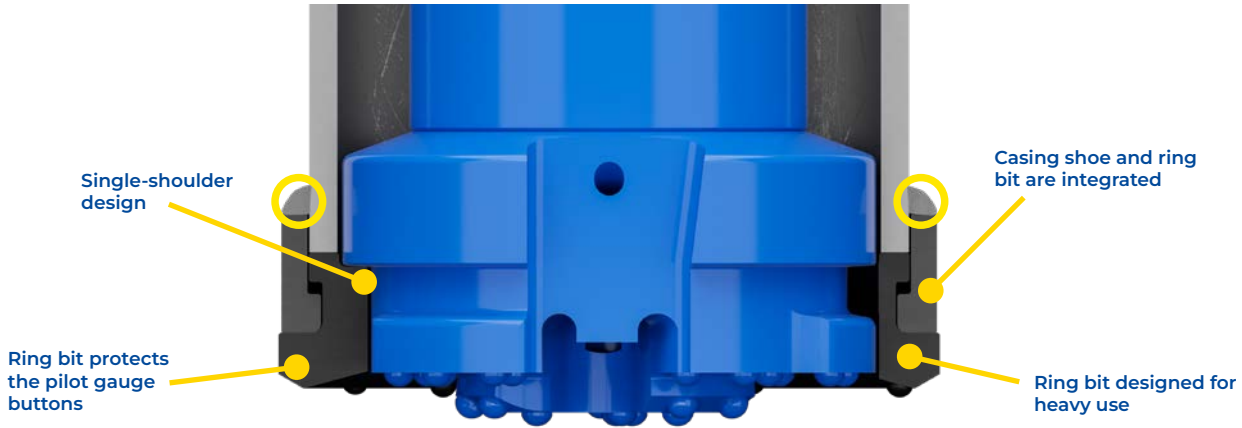


MAIN APPLICATIONS

- End-bearing piles including micro-piling
- Pilings with sacrificed casings, which have no large ID ring bit requirements
- Slope stabilization
- Pipe walls, king piles



INTEGRATED SYSTEM, SMALL 114–273 mm



○ = Welding spot

System is available for all major shank designs.
Sizes 114–178 mm can be ordered with Spiral Flush Mini or conventional flushing.

SPIRALFLUSH®

System product code	Casing OD mm	inch	Max wall mm	inch	Ring bit ID mm	inch	Ring bit OD mm	inch	Pilot bit OD mm	inch	Recommended hammer
I114-10-76	114.3	4.5"	10	0.39"	76	2.99"	130	5.12"	89	3.50"	MP30-DH
HDI114-10-76	114.3	4.5"	10	0.39"	76	2.99"	138	5.43"	89	3.50"	MP30-DH
I127-10-87	127	5"	10	0.39"	87	3.43"	145	5.71"	105	4.13"	MP30-DH
I140-10-100	139.7	5.5"	10	0.39"	102	4.02"	160	6.30"	116	4.57"	MP4H-MQ
HDI140-10-100	139.7	5.5"	10	0.39"	102	4.02"	168	6.61"	116	4.57"	MP4H-MQ
I152-10-112	152.4	6"	10	0.39"	112	4.41"	172	6.77"	130	5.12"	MP4H-MQ
I159-10-118	158.8	6.25"	10	0.39"	118	4.65"	181	7.13"	136	5.35"	MP4H-MQ
I168-12.7-125	168.3	6.63"	12.7	0.5"	125	4.92"	189	7.44"	140	5.51"	MP50-MQ
HDI168-12.7-125	168.3	6.63"	12.7	0.5"	125	4.92"	196	7.72"	140	5.51"	MP50-MQ
I178-12.7-135	177.8	7"	12.7	0.5"	135	5.31"	199	7.83"	151	5.94"	MP50-MQ
I194-12.7-147	193.7	7.63"	12.7	0.5"	147	5.79"	221	8.70"	166	6.54"	MP60-MQ
I219-12.7-171	219.1	8.63"	12.7	0.5"	171	6.73"	243	9.57"	188	7.40"	MP70-MC-D160
HDI219-12.7-171	219.1	8.63"	12.7	0.5"	171	6.73"	252	9.92"	188	7.40"	MP70-MC-D160
I244-12.7-190	244.5	9.63"	12.7	0.5"	190	7.48"	269	10.59"	216	8.50"	MP80-MQ
I254-14.2-197	254	10"	14.2	0.56"	197	7.76"	279	10.98"	223	8.78"	MP80-MQ
I273-12.7-220	273	10.74"	12.7	0.5"	220	8.66"	300	11.81"	244	9.61"	MP80-MQ
HDI273-12.7-220	273	10.74"	12.7	0.5"	220	8.66"	310	12.20"	244	9.61"	MP80-MQ

The single-shoulder pilot is not compatible with the solitary double-shoulder ring bits.