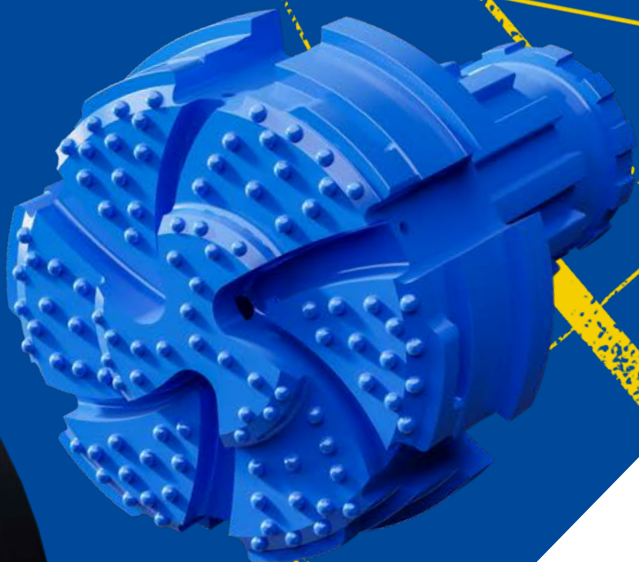
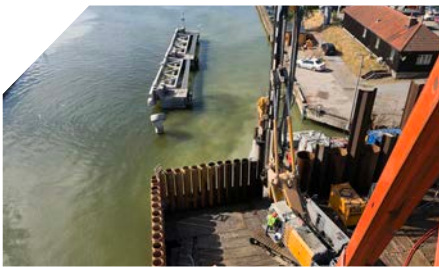


# INTEGRATED M-WALL RING BIT SYSTEM



**Integrated M-Wall ring bit system** is used to drill straight interlocked casings through boulders and rock layers even into inclined bedrock. M-Wall is a perfect solution to replace sheet piles and slurry walls in rocky ground conditions.

The integrated design means that the casing shoe and the ring bit are permanently connected together. This makes drilling over water safe as there is no risk of accidentally dropping the ring bit into water.

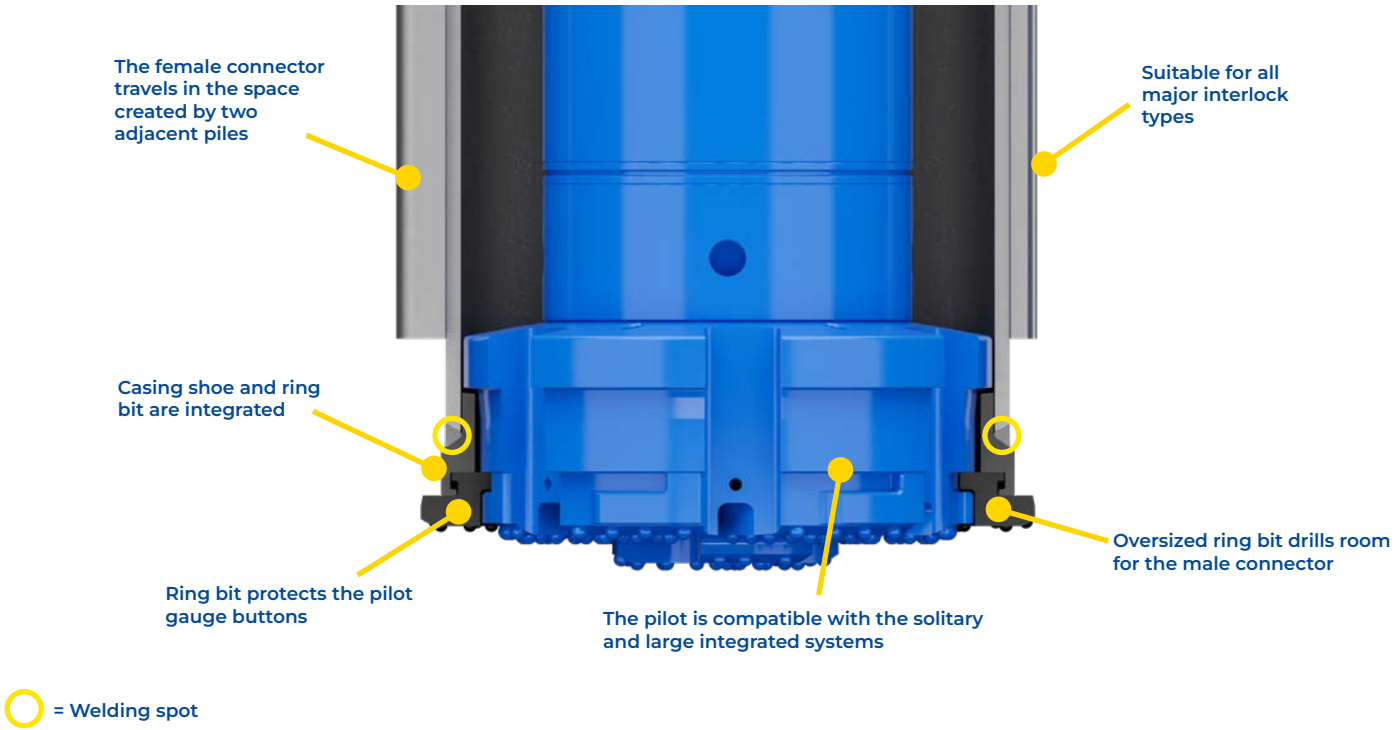


## MAIN APPLICATIONS

- Interlocked walls and roofs
- Cofferdams
- Retaining walls
- Watertight cut off walls



## INTEGRATED M-WALL RING BIT SYSTEM 219–1 219 mm



System is available for all major shank designs.

SPIRALFLUSH®

System product code	Casing OD mm	inch	Max wall mm	inch	Ring bit ID mm	inch	Ring bit OD mm	inch	Pilot bit OD mm	inch	Recommended hammer
XLI219-12.7-150	219.1	8.63"	12.7	0.5"	150	5.91"	277	10.91"	191	7.52"	MP70-MC-D160
XLI244-14.2-170	244.5	9.63"	14.2	0.56"	170	6.69"	302	11.89"	213	8.37"	MP80-MQ
XLI254-14.2-178	254	10"	14.2	0.56"	178	7.01"	312	12.28"	223	8.78"	MP80-MQ
XLI273-12.7-192	273	10.75"	12.7	0.5"	192	7.56"	331	13.03"	245	9.65"	MP80-MQ
XLI301-14.2-220	301.6	11.87"	14.2	0.56"	220	8.66"	355	13.98"	270	10.63"	MP80-MQ
XLI323-14.2-240	323.9	12.75"	14.2	0.56"	240	9.45"	378	14.88"	291	11.62"	MP100-MC
XLI339-14.2-255	339.7	13.37"	14.2	0.56"	255	10.04"	393	15.47"	308	12.13"	MP100-MC
XLI355-14.2-270	355.6	14"	14.2	0.56"	270	10.63"	409	16.10"	324	12.76"	MP100-MC
XLI406-16-318	406.4	16"	16	0.63"	318	12.52"	460	18.11"	370	14.57"	MP120-MC
XLI457-16-360	457.2	18"	16	0.63"	369	14.53"	511	20.12"	420	16.54"	MP120-MC
XLI508-16-422	508	20"	16	0.63"	422	16.61"	562	22.13"	471	18.54"	MP150-MC
XLI559-16-470	558.8	22"	16	0.63"	470	18.50"	613	24.13"	521	20.51"	MP150-MC
XLI610-16-502	609.6	24"	16	0.63"	502	19.76"	664	26.14"	572	22.52"	MP180-MQ
XLI660-16-545	660.4	26"	16	0.63"	545	21.46"	714	28.11"	615	24.21"	MP180-MQ
XLI711-16-610	711.2	28"	16	0.63"	610	24.02"	765	30.12"	675	26.76"	MP240-MQ
XLI762-20-655	762	30"	20	0.79"	655	25.79"	816	32.13"	715	28.15"	MP240-MQ
XLI813-20-700	812.8	32"	20	0.79"	700	27.56"	867	34.13"	766	30.16"	MP240-MQ
XLI863-20-750	863.6	34"	20	0.79"	750	29.53"	917	36.10"	815	32.09"	MP240-MQ
XLI914-20-800	914.4	36"	20	0.79"	800	31.50"	968	38.11"	866	34.09"	MP240-MQ
XLI1016-20-880*	1 016	40"	20	0.79"	880	34.65"	1 070	42.13"	966	38.09"	MP340
XLI1067-20-931*	1 066.8	42"	20	0.79"	931	36.65"	1 121	44.13"	1 014	39.92"	MP340
XLI1219-22-1080*	1 219.2	48"	22	0.87"	1 080	42.52	1 273	50.12"	1 164	45.83"	MP340

\*Large-diameter systems can be engineered based on the specific customer requirements.